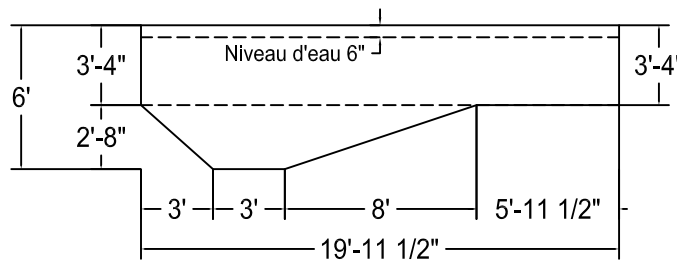
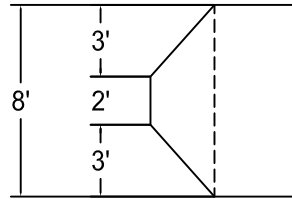
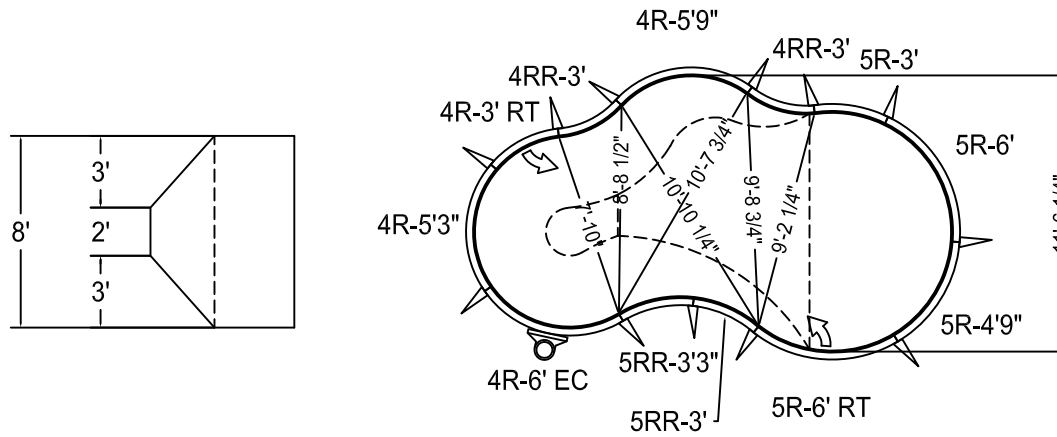
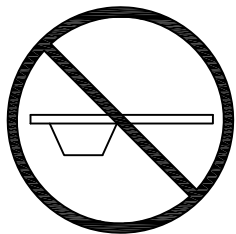


Tahiti Inv. 8 x 10 x 20 Gauche

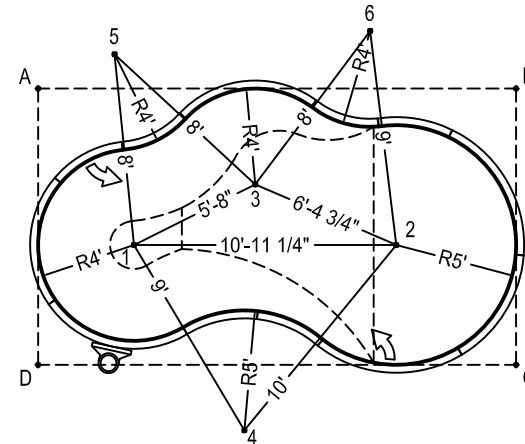
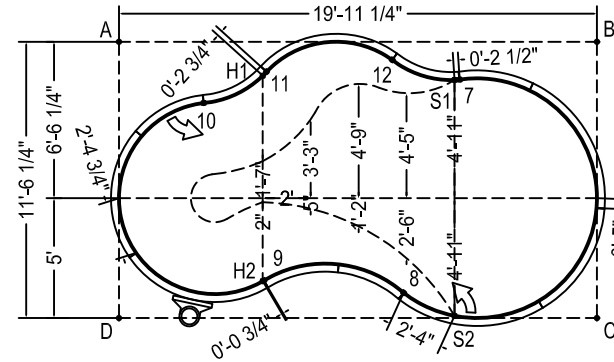


BNQ 9461-100/2009



NON CONFORME
pour plongeoir

Description	Code Produit	Qté
5R-6'	PAN-060CR72P	1
5R-6' Retour	PAN-060CR72I	1
5R-4'9"	PAN-060CR57P	1
5R-3'	PAN-060CR36P	1
4R-6' Écumeiro	PAN-048CR72S	1
4R-5'9"	PAN-048CR69P	1
4R-5'3"	PAN-048CR63P	1
4R-3' Retour	PAN-048CR36I	1
4RR-3'	PAN-048RR36P	2
5RR-3'3"	PAN-060RR39P	1
5RR-3'	PAN-060RR36P	1
Frame En A	PAN-00000AF	12
Stake Rode Paquet de 30	AQ-STAKE50	1
Nuts and bolts Paquet de 50	AQ-NBOLT50	2



	A	B	C	D
1	7'-7 3/4"	17'-2 3/4"	16'-8 1/2"	6'-4 3/4"
2	16'-3 3/4"	8'-2 3/4"	7'-0 3/4"	15'-9 1/4"
3	9'-11"	11'-7 1/4"	13'-2 3/4"	11'-9 1/2"
4	16'-7 3/4"	18'-2 1/2"	11'-8"	9'-0 1/2"
5	3'-6"	16'-9 3/4"	21'-2 1/4"	13'-4 1/4"
6	14'-0 3/4"	6'-6 1/2"	15'-2 1/2"	19'-7 3/4"
7	14'-3 1/2"	5'-11 1/4"	11'-5 3/4"	17'-4 1/4"
8	15'-10"	13'-2 3/4"	8'-1 3/4"	11'-11"
9	11'-7 3/4"	17'-1 1/4"	13'-11 3/4"	6'-3"
10	4'-4 1/4"	16'-7 1/4"	18'-8 1/2"	9'-7 3/4"
11	6'-3 1/2"	13'-10 1/4"	17'-2 1/4"	11'-11 3/4"
12	11'-5 1/4"	8'-7"	13'-9"	15'-8 1/4"
H1	6'-2"	14'-0 1/4"	17'-2 3/4"	11'-9"
H2	11'-7 3/4"	17'-2"	14'-0 1/2"	6'-2 1/4"
S1	14'-1"	6'-2"	11'-7"	17'-2"
S2	18'-1"	12'-10 3/4"	5'-11 1/2"	14'
A	-	19'-11 1/4"	23'-0 1/2"	11'-6 1/4"